

Observe Colour Taskworx® Tile

Numéro Du Style	5T367	
Collection	Living Systems	
Type De Produit	Dalles De Moquette	
Construction	Standard	Data + Performance
Type De Fabrication	ISO 2424	tufted 1/10" 39.4 per 10cm
Construction	ISO 2424	Tufté Structuré Bouclé à Motif
Méthode De Coloration	EN 994	100% Solution Teinte
Dimensions Du Produit	EN 994	25 cm x 100 cm 20 tiles (5 m²) per box
Sous-couche Primaire	ISO 2424	Pet Non-Woven
Sous-couche Secondaire	ISO 2424	Taskworx® Tile Bitume Modifié Par Polymère
Fibre	ISO 2424	Eco Solution Q100™ Polyamide 6 Contient 100% De Contenu Recyclé
Epaisseur Du Velours	ISO 1765	7.3 mm
Épaisseur Du Velours Fini	ISO 1766	1.2 mm
Poids Total	ISO 8543	5102 g/m²
Poids Tufté	ISO 2424	814 g/m²
Poids Du Velours Utile	ISO 8543	160 g/m²
Densité Du Velours	ISO 8543	0.133 g/cm³
Contenu Recyclé Total	65% (pre-consumer 65% post-consumer 0%)	

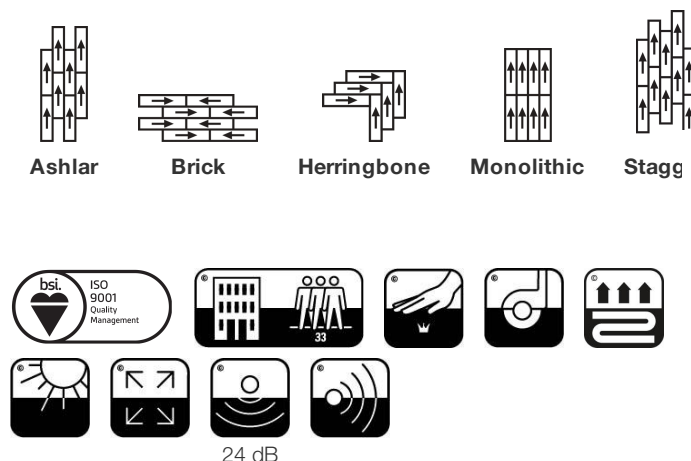


Données

Points	ISO 1763	124,000/m² 31.5 per 10cm
Propension Électrostatique	ISO 6356	≤ 2.0 kv (Stroll Test)
Classification d'Utilisation	EN 1307	33 Commercial Heavy
Classification Luxe	EN 1307	LC1
Stabilité Dimensionnelle	EN 986	≤ 0.2%
Isolation Acoustique	ISO 10140	24 Db*
Classification d'Absorption Sonore	ISO 354/11654	0.15 Aw Class E*
Résistance Thermique m² K/w	ISO 8302	0.085 M² K/W Tog 0.85
Dry Slip Resistance	ISO 13893	Pass / No Pulled Loops
Résistance De La Couleur À La Lumière	ISO 105-B02	>6
Inflammabilité	EN 13501-1	Bfl-S1 (Adhered Testing)
Chaise À Roulette	EN 985	≥2.4 Continuous Use

Limitée Commerciale De 15 Ans subject to installation in full accordance with manufacturer's instructions and a regular effective cleaning and maintenance programme.

Méthodes d'Installation Conseillées



17

EU.DOP/0493/CPR/0621/0422/BT

OOSTERHOUT SHOWROOM, VAARTWEG 10, 4905 BL NETHERLANDS (NLD)

Notified Body 2895

22

UK.DOP/0338/CPR/1220/0422/BT

SHAW EUROPE LIMITED BLACKADDIE RD, SANQUHAR DG4 6DB, UNITED KINGDOM

Approved Body 0338

EN14041:2004/AC:2006

For use as an indoor floor covering as specified by the manufacturer

Corporate Headquarters +1 800 257 7429 | +1 706 532 7984 | Atlanta +1 404 853 7429 | Bengaluru +91 80 6773 0202 | Beijing +86 10 6568 588 | Chicago +1 312 467 1331 | Dubai +971 4 584 6956 | Hong Kong +852 2623 0371 | Latin America (Miami) +1 305 827 5912 | London +44 207 961 4120 | Los Angeles +1 800 233 1614 | Melbourne +61 3 9939 8543 | Mexico City +55 5010 7600 | Mumbai +91 22 6284 5050 | Nantong +86 400 800 7429 | New York +1 212 953 7429 | Paris +33 (0) 1 81 22 44 39 | San Francisco +1 415 955 1920 | Santiago +562 2431 5000 x 550 | São Paulo +55 11 3071 1702 | Shanghai +86 21 3338 4000 | Singapore +65 6733 1811 | Sydney +1 800 556 302

Coordination Des Produits

Carpet Tile: **Observe Colour Comfortworx® Tile, Endless Comfortworx® Tile, Respond Colour Comfortworx® Tile, Transform Colour Comfortworx® Tile, Source Comfortworx® Tile, Boundless Comfortworx® Tile, Observe Comfortworx® Tile, Respond Comfortworx® Tile, Transform Comfortworx® Tile, Endless Taskworx® Tile, Respond Taskworx® Tile, Observe Taskworx® Tile, Transform Taskworx® Tile, Respond Colour Taskworx® Tile, Transform Colour Taskworx® Tile, Boundless Taskworx® Tile, Source Taskworx® Tile**

Attributs + Certifications

Certifications Below Apply Exclusively To The Carpet Tile Rug Itself And Not The Lokworx Tabs Adhesive

Declaration of Performance	EU.DOP/0493/CPR/0621/0422/BT
Certification Cradle to Cradle™ (C2C)	Bronze Level (Version 3.1)
Déclaration environnementale de produit (EPD)	Certifié Par Un Organisme Tiers Conformément Aux Normes ISO14044, ISO 14025 & EN15804
Embodied Carbon (Cradle to Gate)	4.17 kg CO ₂ /m ²
Life-Cycle Carbon Emissions	Carbon Neutral
garantie environnementale	Take Back Policy Offered For All Taskworx Products
ISO 9001	Certifié
pays d'origine	United Kingdom
BREEAM Contribution Credit	Certificate of Approval Schools/Offices/Health/Industrial Shed Retail

Well V2 Contribution Credit

X08 Hazardous Material Reduction Part 1: Limit Hazardous Materials Optimization	C2C Bronze Level (Version 3.1)
X10 Volatile Compound Reduction Part 1 (A): Manage Volatile Organic Compounds (VOCs) Optimization	C2C Bronze Level (Version 3.1)
X11 Long Term Emissions Control Part 2: Flooring Optimization	M1> Emissions Class For Building Material
X13 Enhanced Material Precaution Part 1: Select Optimized Materials Optimization	C2C Bronze Level (Version 3.1)
X14 Material Transparency Part 1: Promote Ingredient Disclosure Optimization	C2C Bronze Level (Version 3.1)

Contribution À La Certification Leed

MR Credit: Building Product Disclosure and Optimisation Environmental Product Declarations - Option 1: Environmental Product Declaration (EPD)	3rd Party Certified in Accordance with ISO14044, ISO14025 & EN15804
MR Credit: Building Product Disclosure and Optimisation Material Ingredients - Option 1: Material Ingredient Reporting	C2C Bronze Level (Version 3.1)
MR Credit: Building Product Disclosure and Optimisation Material Ingredients - Option 2: Material Ingredient Optimization	C2C Bronze Level (Version 3.1)
"Crédit EQ : matériaux faibles émissions Option 1 : calculs par catégorie de produit"	Certified

Air Quality

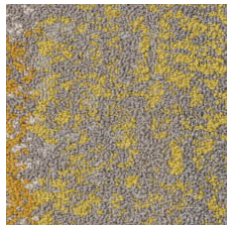
Indoor Air Comfort Gold	Certified
M1	Certified

Memberships

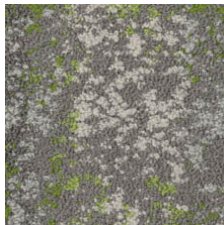
WGBC Framework
UKGBC
Emirates Green Building Council
Chemsec

WGBC Framework
UKGBC
Emirates Green Building Council
Chemsec

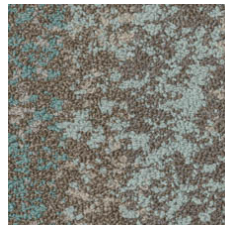
Indice De Réflexion Lumineuse



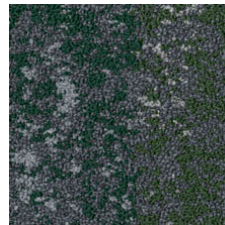
Optimistic Ochr 05225
LRV 18.4



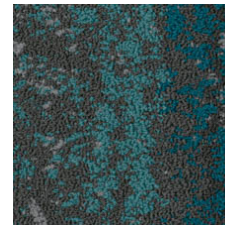
Radiant Nature 05326
LRV 18.4



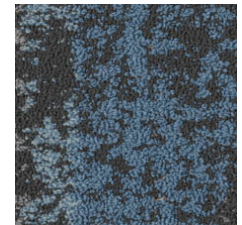
Mountain Lake 05327
LRV 16



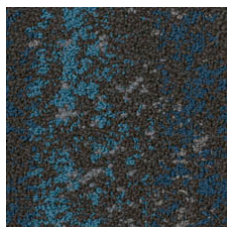
Untamed Forests 05334
LRV 7.8



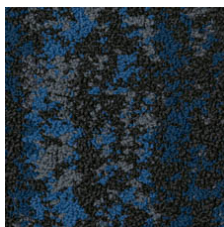
Calm Oceans 05405
LRV 7.7



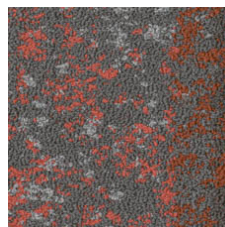
Wild Flora 05411
LRV 10.6



Lava Springs 05440
LRV 5.3



Deepest Skies 05486
LRV 4.4



Fragile Coral 05865
LRV 8.2

Informations Supplémentaires

**Manufactured in ISO 9001 certified facility. Meets or exceeds all local and national regulations in country of manufacture.

[Installation Guidelines](#)

[Maintenance Guidelines](#)

[Limitée commerciale de 15 ans](#)

Specifications are subject to nominal manufacturing variance. Material supply and/or manufacturing processes may necessitate changes without notice.

This product is an exclusive design and may not be duplicated in any manner. Use of this design in the creation of another product design is also strictly prohibited.

Visit shawcontract.com/testing for more information.



Corporate Headquarters +1 800 257 7429 | +1 706 532 7984 | Atlanta +1 404 853 7429 | Bengaluru +91 80 6773 0202 | Beijing +86 10 6568 588 | Chicago +1 312 467 1331 | Dubai +971 4 584 6956 | Hong Kong +852 2623 0371 | Latin America (Miami) +1 305 827 5912 | London +44 207 961 4120 | Los Angeles +1 800 233 1614 | Melbourne +61 3 9939 8543 | Mexico City +55 5010 7600 | Mumbai +91 22 6284 5050 | Nantong +86 400 800 7429 | New York +1 212 953 7429 | Paris +33 (0) 1 81 22 44 39 | San Francisco +1 415 955 1920 | Santiago +562 2431 5000 x 550 | São Paulo +55 11 3071 1702 | Shanghai +86 21 3338 4000 | Singapore +65 6733 1811 | Sydney +1 800 556 302

© 2024 Shaw Industries Group, Inc., a Berkshire Hathaway Company
May 13, 2024

3 of 3